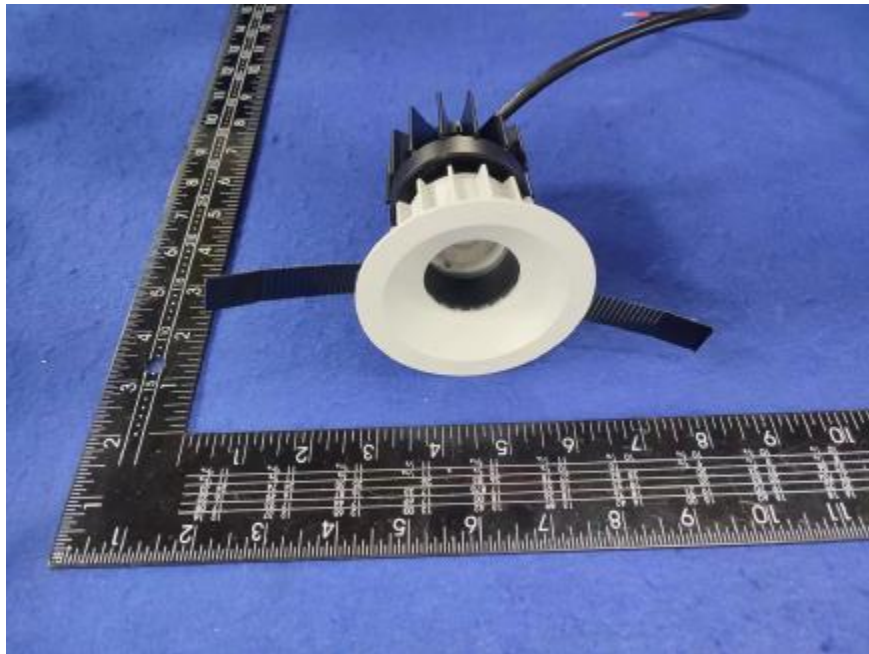


Luminaire Photograph



Light Output Ratio:	69.6%	
Luminaire Power:	10.17 W	
SHR Nominal:	0.50	Calculated using the TM5
SHR Maximum:	0.50	fine grid method.

C Range: 0 - 360DEG
C Interval: 30.0DEG
Test Speed: HIGH
Temperature: 25.3 °C
Operators: zoe
Test Date: 2024-5-21

γ Range: 0 - 180DEG
 γ Interval: 1.0DEG
Test System: EVERFINE GO-SPEX500_V1 SYSTEM V2.00.461
Humidity: 65.0%
Test Distance: 3.160m [K=1.0000]
Remarks: LAMP: BXRE-30G10TH-A-83 Ra: 90
LENS: PM-1082A-WH 24R
NO DRIVER: 300mA
30minutes warm-up

LUMINOUS INTENSITY DISTRIBUTION DIAGRAM

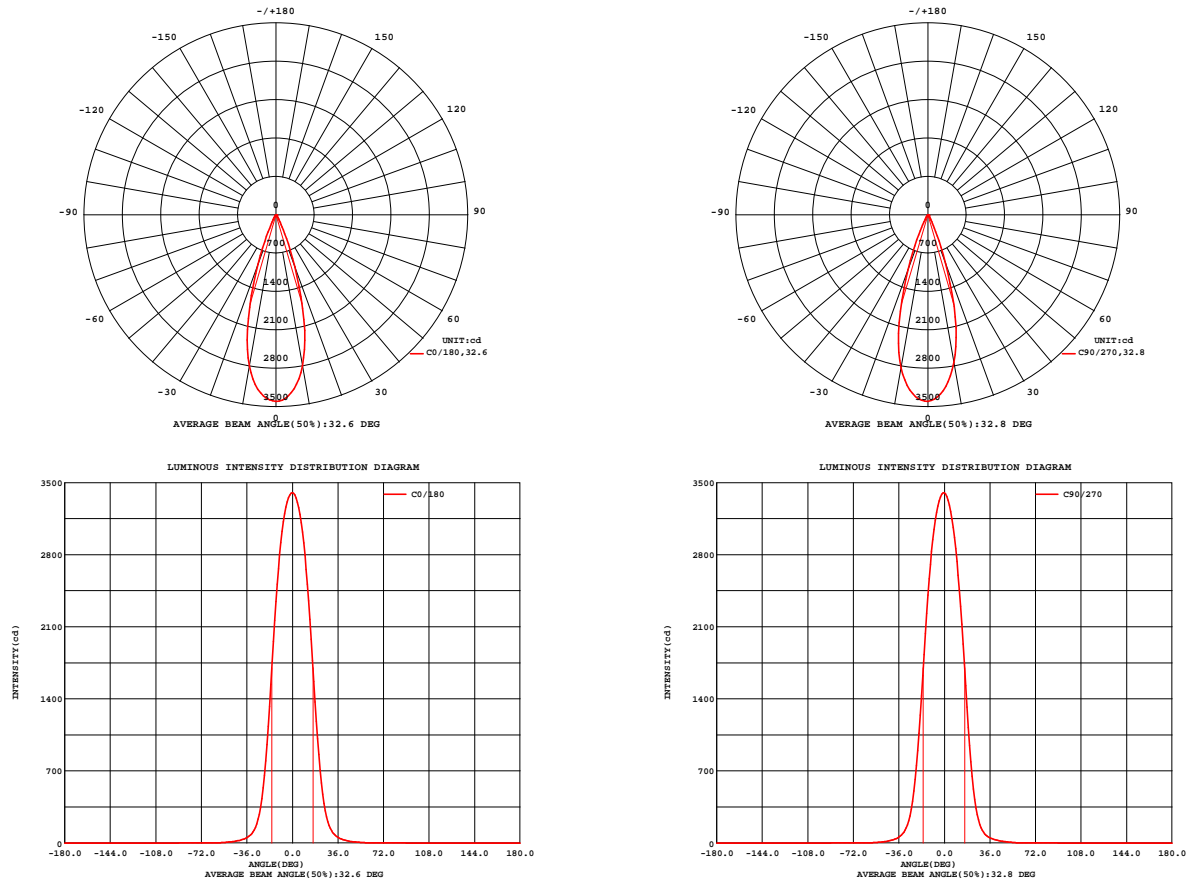


Fig. C0/C180

Fig. C90/C270

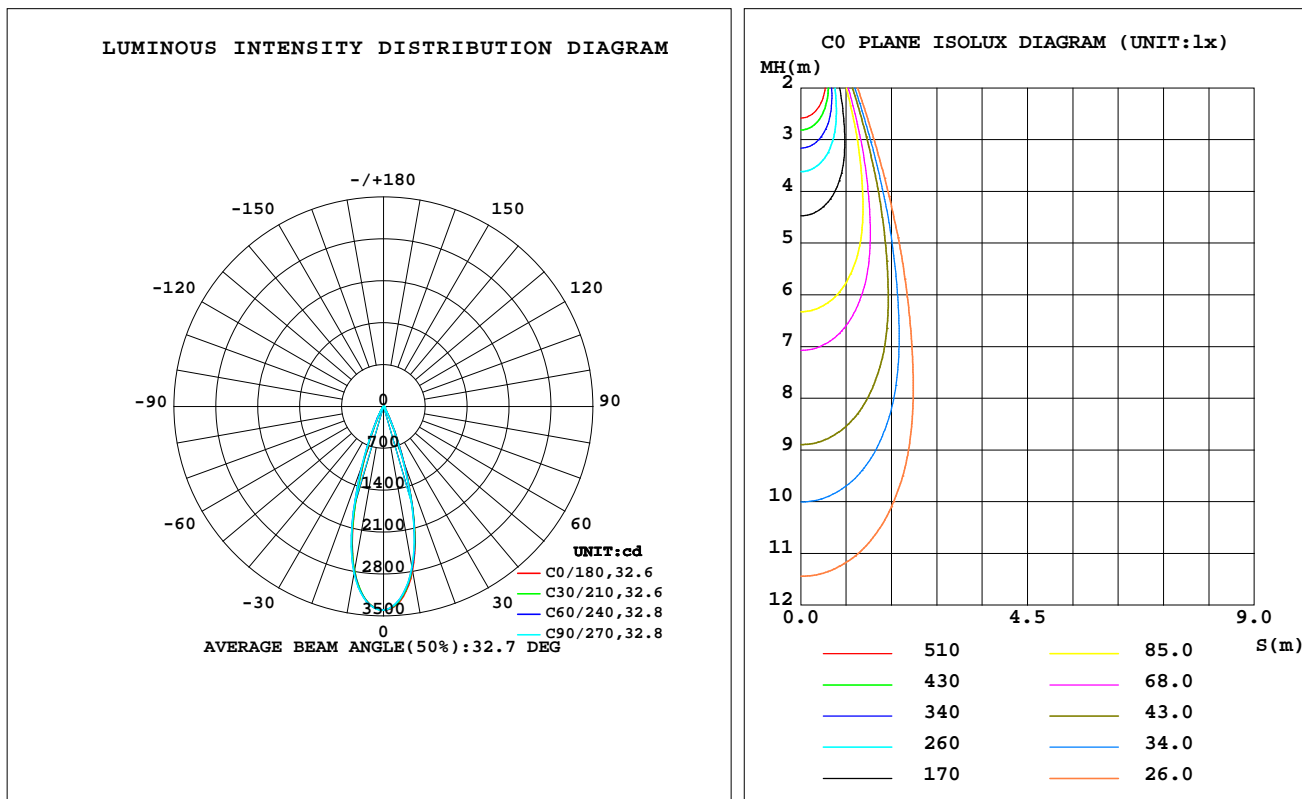
C Range: 0 - 360DEG
C Interval: 30.0DEG
Test Speed: HIGH
Temperature: 25.3 °C
Operators: zoe
Test Date: 2024-5-21

γ Range: 0 - 180DEG
γ Interval: 1.0DEG
Test System: EVERFINE GO-SPEX500_V1 SYSTEM V2.00.461
Humidity: 65.0%
Test Distance: 3.160m [K=1.0000]
Remarks: LAMP: BXRE-30G10TH-A-83 Ra: 90
LENS: PM-1082A-WH 24R
NO DRIVER: 300mA
30minutes warm-up

LUMINAIRE PHOTOMETRIC TEST REPORT

Test:U:33.885V I:0.3000A P:10.165W PF:1.0000 Freq:0Hz Lamp Flux:1537.95x1 lm		
NAME: 2318.127-ACOT-70-HE	TYPE:	WEIGHT:
SPEC.: 3000K	DIM.:	SERIAL No.: 2405210567
MFR.: RISE	SUR.: 0.00362984m2	Shielding Angle:

DATA OF LAMP		PHOTOMETRIC DATA Eff: 105.35 lm/W			
MODEL	Brideglux	Imax(cd)	3401	S/MH(C0/180)	0.51
NOMINAL POWER(W)	10	LOR(%)	69.6	S/MH(C90/270)	0.52
RATED VOLTAGE(V)	34	TOTAL FLUX(lm)	1071.0	η UP,DN(C0-180)	0.0,34.3
NOMINAL FLUX(lm)	1537.95	CIE CLASS	DIRECT	η UP,DN(C180-360)	0.0,35.4
LAMPS INSIDE	1	η up(%)	0.0	CIBSE SHR NOM	0.50
TEST VOLTAGE(V)	34	η down(%)	69.6	CIBSE SHR MAX	0.50



C Range: 0 - 360DEG
C Interval: 30.0DEG
Test Speed: HIGH
Temperature:25.3℃
Operators:zoe
Test Date:2024-5-21

γ Range: 0 - 180DEG
 γ Interval: 1.0DEG
Test System:EVERFINE GO-SPEX500_V1 SYSTEM V2.00.461
Humidity:65.0%
Test Distance:3.160m [K=1.0000]
Remarks: LAMP:BXRE-30G10TH-A-83 Ra:90
LENS:PM-1082A-WH 24R
NO DRIVER:300mA
30minutes warm-up

ZONAL FLUX DIAGRAM

ZONAL FLUX DIAGRAM:

γ	C0	C45	C90	C135	C180	C225	C270	C315	γ	Φ zone	Φ total	%lum,lamp
10	2791	2754	2734	2763	2797	2809	2832	2824	0- 10	295.7	295.7	27.6,19.2
20	1011	985.4	945.2	932.9	956.4	1014	1064	1046	10- 20	522.3	818.1	76.4,53.2
30	142.3	135.5	122.4	121.4	126.8	137.5	146.7	147.3	20- 30	191.3	1009	94.2,65.6
40	32.96	33.13	32.27	31.72	31.38	31.34	33.33	33.76	30- 40	42.35	1052	98.2,68.4
50	9.381	9.800	9.759	9.611	9.351	8.770	9.184	9.235	40- 50	14.06	1066	99.5,69.3
60	1.481	1.491	1.460	1.400	1.361	1.346	1.350	1.397	50- 60	4.120	1070	99.9,69.6
70	0.4343	0.4320	0.4351	0.4327	0.4277	0.4125	0.4074	0.4083	60- 70	0.8665	1071	100,69.6
80	0.0615	0.0471	0.0580	0.0523	0.0623	0.0568	0.0655	0.0483	70- 80	0.1763	1071	100,69.6
90	0	0	0	0	0	0	0	0	80- 90	0.0307	1071	100,69.6
100	0	0	0	0	0	0	0	0	90-100	0	1071	100,69.6
110	0	0	0	0	0	0	0	0	100-110	0	1071	100,69.6
120	0	0	0	0	0	0	0	0	110-120	0	1071	100,69.6
130	0	0	0	0	0	0	0	0	120-130	0	1071	100,69.6
140	0	0	0	0	0	0	0	0	130-140	0	1071	100,69.6
150	0	0	0	0	0	0	0	0	140-150	0	1071	100,69.6
160	0	0	0	0	0	0	0	0	150-160	0	1071	100,69.6
170	0	0	0	0	0	0	0	0	160-170	0	1071	100,69.6
180	0	0	0	0	0	0	0	0	170-180	0	1071	100,69.6
DEG	LUMINOUS INTENSITY:cd									UNIT:lm		

C Range: 0 - 360DEG
C Interval: 30.0DEG
Test Speed: HIGH
Temperature:25.3℃
Operators:zoe
Test Date:2024-5-21

γ Range: 0 - 180DEG
 γ Interval: 1.0DEG
Test System:EVERFINE GO-SPEX500_V1 SYSTEM V2.00.461
Humidity:65.0%
Test Distance:3.160m [K=1.0000]
Remarks: LAMP:BXRE-30G10TH-A-83 Ra:90
LENS:PM-1082A-WH 24R
NO DRIVER:300mA
30minutes warm-up

LUMINANCE LIMITATION CURVES

Test:U:33.885V I:0.3000A P:10.165W PF:1.0000 Freq:0Hz
Lamp Flux:1537.95x1 lm

NAME: 2318.127-ACOT-70-HE

TYPE:

WEIGHT:

SPEC.: 3000K

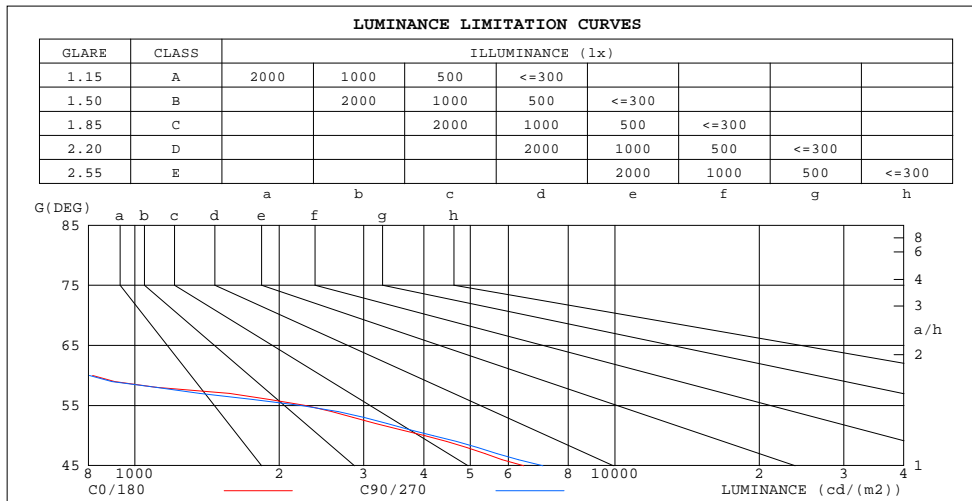
DIM.:

SERIAL No.: 2405210567

MFR.: RISE

SUR.: 0.00362984m2

Shielding Angle:



LUMINANCE cd/(m2)		
G(180)	C0/180	C90/270
85	117	111
80	98	92
75	138	132
70	350	350
65	587	587
60	816	805
55	2273	2225
50	4022	4183
45	6462	7085

C Range: 0 - 360DEG
C Interval: 30.0DEG
Test Speed: HIGH
Temperature:25.3℃
Operators:zoe
Test Date:2024-5-21

γ Range: 0 - 180DEG
γ Interval: 1.0DEG
Test System:EVERFINE GO-SPEX500_V1 SYSTEM V2.00.461
Humidity:65.0%
Test Distance:3.160m [K=1.0000]
Remarks: LAMP:BXRE-30G10TH-A-83 Ra:90
LENS:PM-1082A-WH 24R
NO DRIVER:300mA
30minutes warm-up

CU AND LUMINAIRE BUDGETARY ESTIMATE DIAGRAM

Test:U:33.885V I:0.3000A P:10.165W PF:1.0000 Freq:0Hz
Lamp Flux:1537.95x1 lm

NAME: 2318.127-ACOT-70-HE

TYPE:

WEIGHT:

SPEC.: 3000K

DIM.:

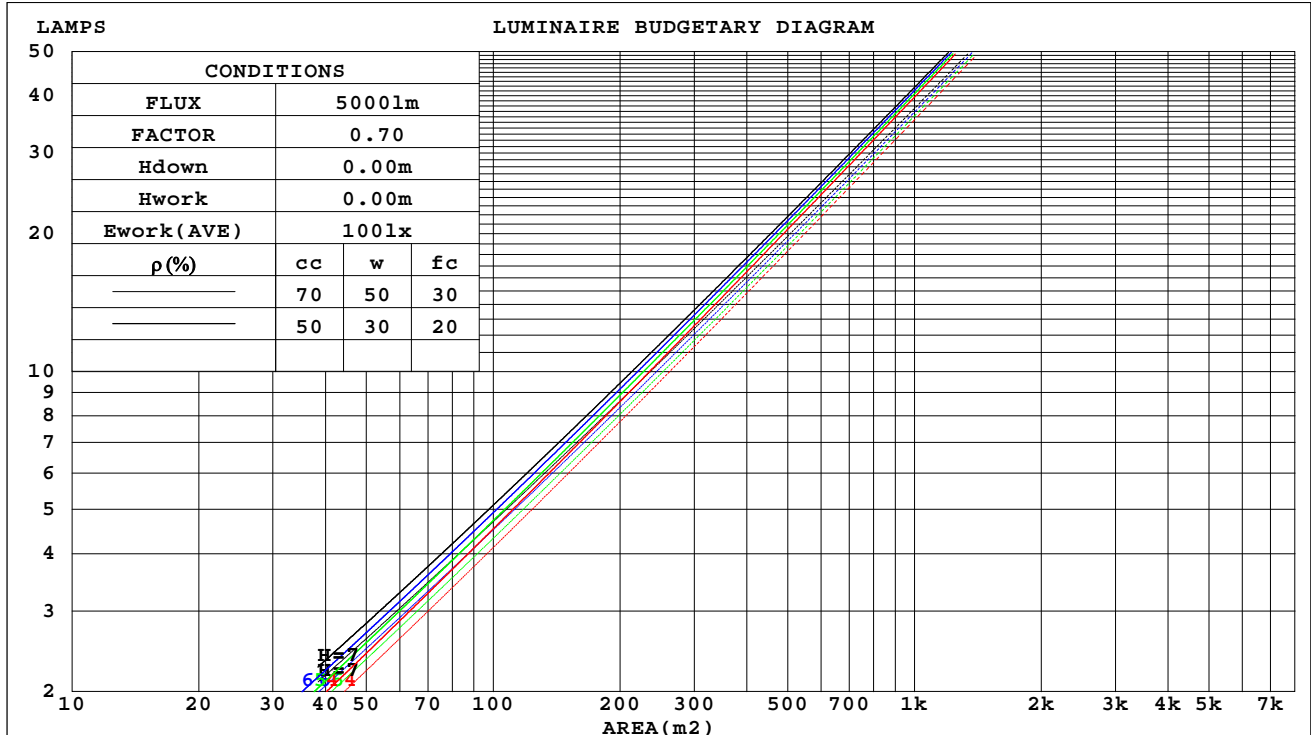
SERIAL No.: 2405210567

MFR.: RISE

SUR.: 0.00362984m2

Shielding Angle:

ρ_{cc}	80%			70%			50%			30%			10%			0
ρ_w	50%	30%	10%	50%	30%	10%	50%	30%	10%	50%	30%	10%	50%	30%	10%	0
ρ_{fc}	20%			20%			20%			20%			20%			0
RCR	RCR:Room Cavity Ratio			Coefficients of Utilization(CU)												
0.0	.83	.83	.83	.81	.81	.81	.77	.77	.77	.74	.74	.74	.71	.71	.71	.70
1.0	.78	.77	.76	.77	.76	.75	.74	.73	.72	.72	.71	.70	.69	.69	.68	.67
2.0	.75	.72	.71	.73	.71	.70	.71	.70	.68	.69	.68	.67	.67	.66	.65	.64
3.0	.71	.68	.66	.70	.68	.66	.68	.66	.65	.67	.65	.64	.65	.64	.63	.62
4.0	.68	.65	.63	.67	.65	.63	.66	.64	.62	.65	.63	.61	.63	.62	.61	.60
5.0	.65	.62	.60	.65	.62	.60	.64	.61	.59	.63	.60	.59	.62	.60	.58	.58
6.0	.63	.60	.58	.62	.59	.57	.61	.59	.57	.61	.58	.57	.60	.58	.56	.56
7.0	.61	.57	.55	.60	.57	.55	.59	.57	.55	.59	.56	.55	.58	.56	.54	.54
8.0	.58	.55	.53	.58	.55	.53	.57	.55	.53	.57	.55	.53	.56	.54	.53	.52
9.0	.57	.54	.51	.56	.53	.51	.56	.53	.51	.55	.53	.51	.55	.53	.51	.50
10.0	.55	.52	.50	.54	.52	.50	.54	.51	.50	.54	.51	.50	.53	.51	.49	.49



C Range: 0 - 360DEG
C Interval: 30.0DEG
Test Speed: HIGH
Temperature:25.3℃
Operators:zoe
Test Date:2024-5-21

γ Range: 0 - 180DEG
 γ Interval: 1.0DEG
Test System:EVERFINE GO-SPEX500_V1 SYSTEM V2.00.461
Humidity:65.0%
Test Distance:3.160m [K=1.0000]
Remarks: LAMP:BXRE-30G10TH-A-83 Ra:90
LENS:PM-1082A-WH 24R
NO DRIVER:300mA
30minutes warm-up

WEC AND CCEC

Test:U:33.885V I:0.3000A P:10.165W PF:1.0000 Freq:0Hz Lamp Flux:1537.95x1 lm		
NAME: 2318.127-ACOT-70-HE	TYPE:	WEIGHT:
SPEC.: 3000K	DIM.:	SERIAL No.: 2405210567
MFR.: RISE	SUR.: 0.00362984m2	Shielding Angle:

pcc	80%			70%			50%			30%			10%			0
pw	50%	30%	10%	50%	30%	10%	50%	30%	10%	50%	30%	10%	50%	30%	10%	0
pfc	20%			20%			20%			20%			20%			0
RCR	RCR:Room Cavity Ratio						Wall Exitance Coefficients(WEC)									
0.0																
1.0	.099	.056	.018	.095	.054	.017	.086	.049	.016	.078	.045	.014	.071	.041	.013	
2.0	.092	.051	.016	.089	.049	.015	.081	.045	.014	.075	.042	.013	.069	.039	.012	
3.0	.086	.046	.014	.083	.045	.013	.077	.042	.013	.072	.039	.012	.067	.037	.011	
4.0	.081	.042	.012	.079	.041	.012	.074	.039	.012	.069	.037	.011	.065	.035	.011	
5.0	.077	.039	.011	.075	.038	.011	.070	.037	.011	.066	.035	.010	.062	.033	.010	
6.0	.073	.037	.010	.071	.036	.010	.067	.034	.010	.064	.033	.010	.061	.032	.009	
7.0	.070	.034	.010	.068	.034	.010	.065	.033	.009	.061	.032	.009	.059	.030	.009	
8.0	.066	.032	.009	.065	.032	.009	.062	.031	.009	.059	.030	.009	.057	.029	.008	
9.0	.064	.031	.009	.062	.030	.009	.060	.030	.008	.057	.029	.008	.055	.028	.008	
10.0	.061	.029	.008	.060	.029	.008	.058	.028	.008	.055	.028	.008	.053	.027	.008	

pcc	80%			70%			50%			30%			10%			0	
pw	50%	30%	10%	50%	30%	10%	50%	30%	10%	50%	30%	10%	50%	30%	10%	0	
pfc	20%			20%			20%			20%			20%			0	
RCR	RCR:Room Cavity Ratio						Ceiling Cavity Exitance Coefficients(CCEC)										
0.0	.133	.133	.133	.113	.113	.113	.077	.077	.077	.044	.044	.044	.014	.014	.014		
1.0	.117	.110	.103	.101	.094	.088	.069	.065	.061	.040	.038	.036	.013	.012	.012		
2.0	.105	.092	.082	.090	.080	.071	.062	.055	.049	.036	.032	.029	.011	.010	.009		
3.0	.095	.079	.066	.081	.068	.057	.056	.047	.040	.032	.028	.024	.010	.009	.008		
4.0	.087	.068	.054	.074	.059	.047	.051	.041	.033	.030	.024	.020	.010	.008	.006		
5.0	.079	.060	.045	.068	.052	.039	.047	.036	.028	.027	.021	.016	.009	.007	.005		
6.0	.073	.053	.038	.063	.046	.033	.044	.032	.024	.025	.019	.014	.008	.006	.005		
7.0	.068	.047	.033	.059	.041	.028	.041	.029	.020	.024	.017	.012	.008	.006	.004		
8.0	.064	.043	.028	.055	.037	.024	.038	.026	.017	.022	.015	.010	.007	.005	.003		
9.0	.060	.039	.024	.052	.034	.021	.036	.024	.015	.021	.014	.009	.007	.005	.003		
10.0	.057	.035	.021	.049	.031	.019	.034	.022	.013	.020	.013	.008	.006	.004	.003		

C Range: 0 - 360DEG
C Interval: 30.0DEG
Test Speed: HIGH
Temperature:25.3℃
Operators:zoe
Test Date:2024-5-21

γ Range: 0 - 180DEG
γ Interval: 1.0DEG
Test System:EVERFINE GO-SPEX500_V1 SYSTEM V2.00.461
Humidity:65.0%
Test Distance:3.160m [K=1.0000]
Remarks: LAMP:BXRE-30G10TH-A-83 Ra:90
LENS:PM-1082A-WH 24R
NO DRIVER:300mA
30minutes warm-up

UGR(Unified Glare Rating) Table

Test:U:33.885V I:0.3000A P:10.165W PF:1.0000 Freq:0Hz Lamp Flux:1537.95x1 lm										
NAME: 2318.127-ACOT-70-HE					TYPE:			WEIGHT:		
SPEC.: 3000K					DIM.:			SERIAL No.: 2405210567		
MFR.: RISE					SUR.: 0.00362984m2			Shielding Angle:		
ceiling/cavity	0.7	0.7	0.5	0.5	0.3	0.7	0.7	0.5	0.5	0.3
walls	0.5	0.3	0.5	0.3	0.3	0.5	0.3	0.5	0.3	0.3
working plane	0.2	0.2	0.2	0.2	0.2	0.2	0.2	0.2	0.2	0.2
Room dimensions	Viewed crosswise					Viewed endwise				
x = 2H y = 2H	7.9	8.6	8.1	8.7	8.9	7.6	8.3	7.8	8.4	8.6
3H	7.7	8.4	8.0	8.6	8.8	7.5	8.1	7.7	8.3	8.5
4H	7.7	8.3	7.9	8.5	8.7	7.4	8.0	7.6	8.2	8.4
6H	7.6	8.2	7.9	8.4	8.6	7.3	7.9	7.6	8.1	8.3
8H	7.5	8.1	7.8	8.3	8.6	7.3	7.8	7.6	8.1	8.3
12H	7.5	8.0	7.8	8.3	8.6	7.2	7.7	7.5	8.0	8.3
4H 2H	7.7	8.3	7.9	8.5	8.7	7.4	8.0	7.7	8.2	8.4
3H	7.5	8.1	7.8	8.3	8.6	7.2	7.8	7.6	8.0	8.3
4H	7.4	7.9	7.8	8.2	8.5	7.2	7.6	7.5	7.9	8.2
6H	7.3	7.8	7.7	8.1	8.4	7.1	7.5	7.4	7.8	8.2
8H	7.3	7.7	7.7	8.0	8.4	7.0	7.4	7.4	7.8	8.1
12H	7.2	7.6	7.6	8.0	8.3	6.9	7.3	7.4	7.7	8.1
8H 4H	7.3	7.7	7.7	8.0	8.4	7.0	7.4	7.4	7.8	8.1
6H	7.2	7.5	7.6	7.9	8.3	6.9	7.2	7.3	7.6	8.0
8H	7.1	7.4	7.5	7.8	8.3	6.8	7.1	7.3	7.5	8.0
12H	7.0	7.3	7.5	7.7	8.2	6.8	7.0	7.2	7.5	7.9
12H 4H	7.2	7.6	7.6	8.0	8.3	6.9	7.3	7.4	7.7	8.1
6H	7.1	7.4	7.5	7.8	8.3	6.8	7.1	7.3	7.5	8.0
8H	7.0	7.3	7.5	7.7	8.2	6.8	7.0	7.2	7.5	7.9
Variations with the observer position at spacings(CIE Pub.117):										
S = 1.0H	+ 3.0 / - 9.2					+ 2.8 / - 9.1				
1.5H	+ 4.5 / - 5.9					+ 4.0 / - 6.2				
2.0H	+ 5.0 / - 8.2					+ 5.4 / - 8.4				

CIE Pub.117, 1538 lm Total Lamp Luminous Flux Correct (8log(F/F0) = 1.5)
Area: 0.00362984 m2

C Range: 0 - 360DEG
C Interval: 30.0DEG
Test Speed: HIGH
Temperature:25.3℃
Operators:zoe
Test Date:2024-5-21

γ Range: 0 - 180DEG
γ Interval: 1.0DEG
Test System:EVERFINE GO-SPEX500_V1 SYSTEM V2.00.461
Humidity:65.0%
Test Distance:3.160m [K=1.0000]
Remarks: LAMP:BXRE-30G10TH-A-83 Ra:90
LENS:PM-1082A-WH 24R
NO DRIVER:300mA
30minutes warm-up

UTILIZATION FACTORS TABLE

Test:U:33.885V I:0.3000A P:10.165W PF:1.0000 Freq:0Hz Lamp Flux:1537.95x1 lm		
NAME: 2318.127-ACOT-70-HE	TYPE:	WEIGHT:
SPEC.: 3000K	DIM.:	SERIAL No.: 2405210567
MFR.: RISE	SUR.: 0.00362984m2	Shielding Angle:

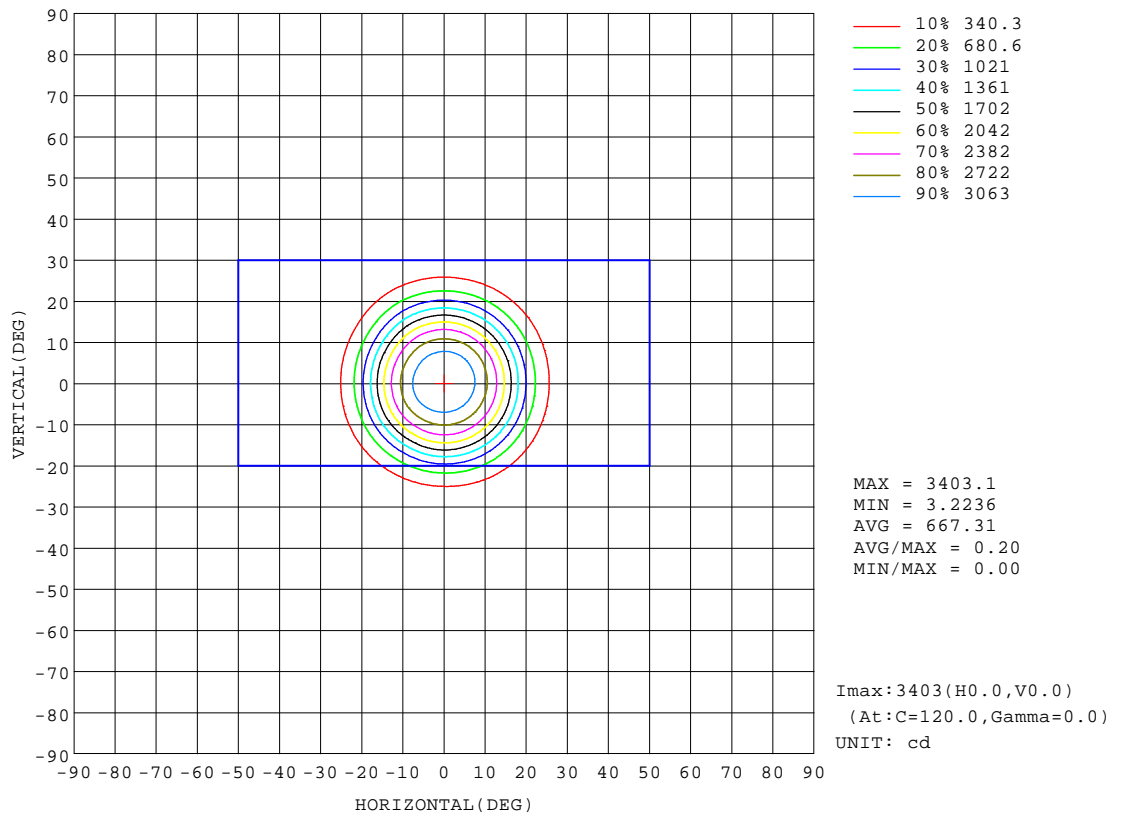
REFLECTANCE										
Ceiling	0.8	0.8	0.8	0.7	0.7	0.7	0.5	0.5	0.5	0
Walls	0.7	0.5	0.3	0.7	0.5	0.3	0.7	0.5	0.3	0
Working plane	0.2	0.2	0.2	0.2	0.2	0.2	0.2	0.2	0.2	0
ROOM INDEX	UTILIZATION FACTORS(PERCENT) $k(RI) \times RCR = 5$									
k = 0.60	63	59	57	63	59	56	62	59	56	54
0.80	68	64	62	67	64	62	67	64	61	59
1.00	71	67	65	70	67	65	69	67	64	62
1.25	73	70	68	72	69	67	71	69	67	64
1.50	75	72	70	74	71	69	72	70	69	66
2.00	76	74	72	75	73	71	74	72	70	67
2.50	77	75	73	76	74	72	74	73	71	67
3.00	78	76	74	77	75	74	75	73	72	68
4.00	80	78	77	78	77	76	76	75	74	69
5.00	81	79	78	79	78	77	76	75	75	70
ROOM INDEX	UF(total)									Direct
According to DIN EN 13032-2 2004			Suspended					SHRNOM = 1.25		

C Range: 0 - 360DEG
C Interval: 30.0DEG
Test Speed: HIGH
Temperature:25.3℃
Operators:zoe
Test Date:2024-5-21

γ Range: 0 - 180DEG
γ Interval: 1.0DEG
Test System:EVERFINE GO-SPEX500_V1 SYSTEM V2.00.461
Humidity:65.0%
Test Distance:3.160m [K=1.0000]
Remarks: LAMP:BXRE-30G10TH-A-83 Ra:90
LENS:PM-1082A-WH 24R
NO DRIVER:300mA
30minutes warm-up

ISOCANDELA DIAGRAM

Test:U:33.885V I:0.3000A P:10.165W PF:1.0000 Freq:0Hz Lamp Flux:1537.95x1 lm		
NAME: 2318.127-ACOT-70-HE	TYPE:	WEIGHT:
SPEC.: 3000K	DIM.:	SERIAL No.: 2405210567
MFR.: RISE	SUR.: 0.00362984m2	Shielding Angle:

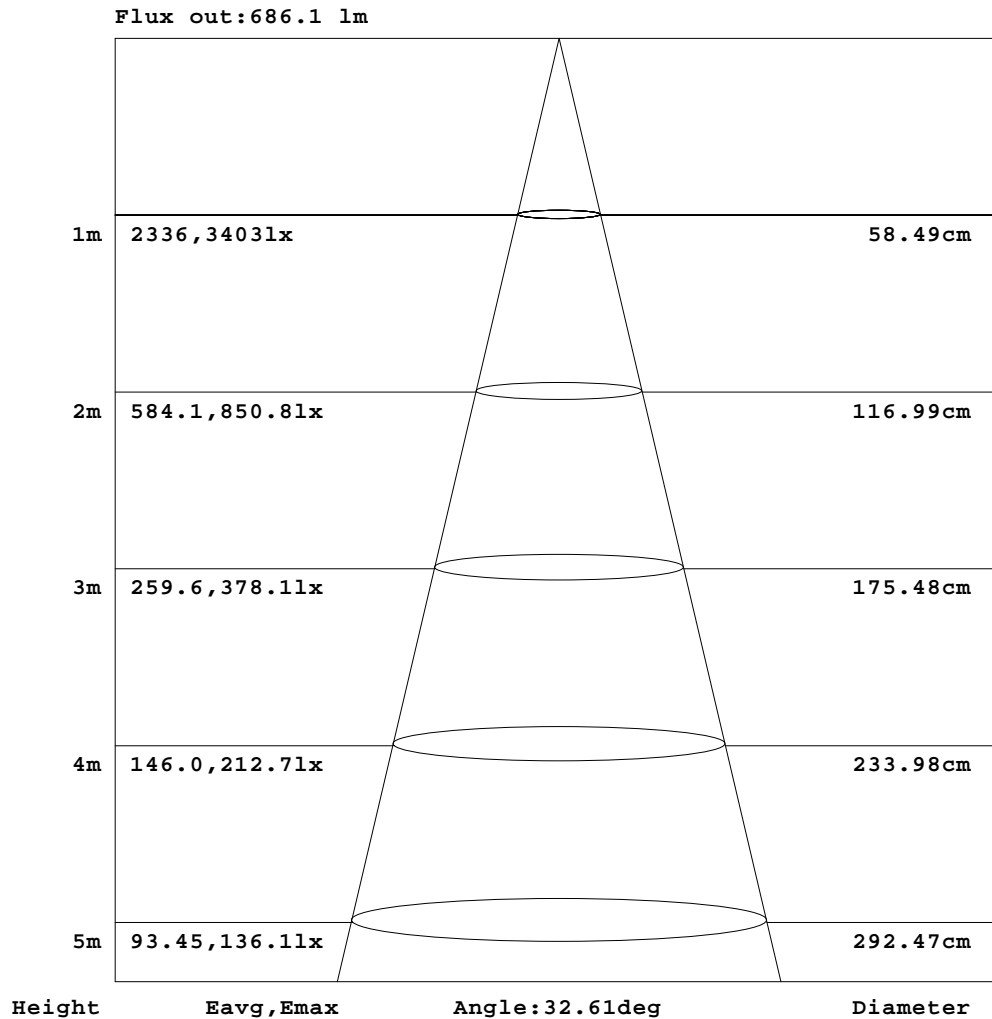


C Range: 0 - 360DEG
C Interval: 30.0DEG
Test Speed: HIGH
Temperature:25.3℃
Operators:zoe
Test Date:2024-5-21

γ Range: 0 - 180DEG
γ Interval: 1.0DEG
Test System:EVERFINE GO-SPEX500_V1 SYSTEM V2.00.461
Humidity:65.0%
Test Distance:3.160m [K=1.0000]
Remarks: LAMP:BXRE-30G10TH-A-83 Ra:90
LENS:PM-1082A-WH 24R
NO DRIVER:300mA
30minutes warm-up

AAI Figure

Test:U:33.885V I:0.3000A P:10.165W PF:1.0000 Freq:0Hz Lamp Flux:1537.95x1 lm		
NAME: 2318.127-ACOT-70-HE	TYPE:	WEIGHT:
SPEC.: 3000K	DIM.:	SERIAL No.: 2405210567
MFR.: RISE	SUR.: 0.00362984m2	Shielding Angle:



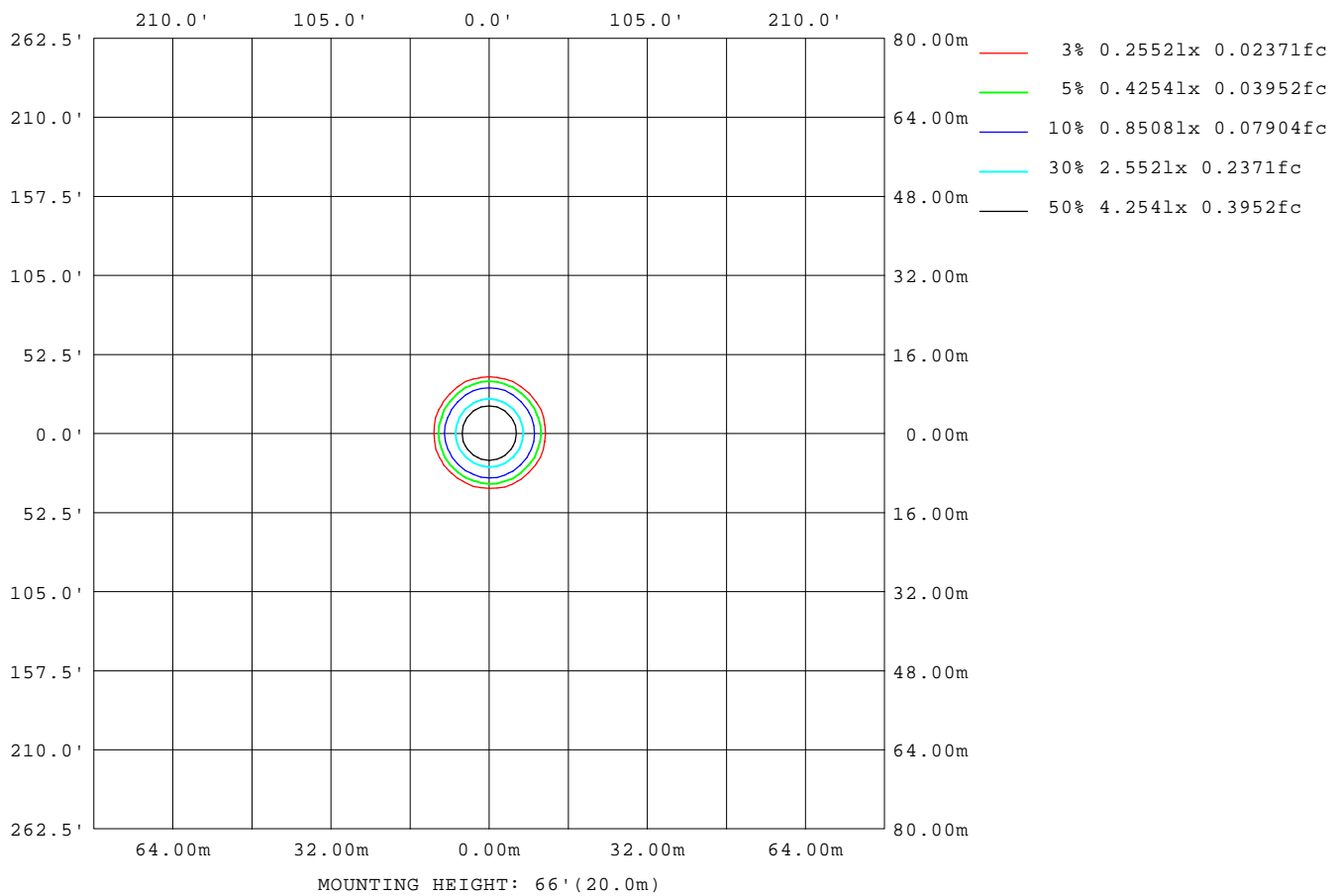
Note:The Curves indicate the illuminated area and the average illumination when the luminaire is at different distance.

C Range: 0 - 360DEG
C Interval: 30.0DEG
Test Speed: HIGH
Temperature:25.3℃
Operators:zoe
Test Date:2024-5-21

γ Range: 0 - 180DEG
γ Interval: 1.0DEG
Test System:EVERFINE GO-SPEX500_V1 SYSTEM V2.00.461
Humidity:65.0%
Test Distance:3.160m [K=1.0000]
Remarks: LAMP:BXRE-30G10TH-A-83 Ra:90
LENS:PM-1082A-WH 24R
NO DRIVER:300mA
30minutes warm-up

ISOLUX DIAGRAM

Test:U:33.885V I:0.3000A P:10.165W PF:1.0000 Freq:0Hz Lamp Flux:1537.95x1 lm		
NAME: 2318.127-ACOT-70-HE	TYPE:	WEIGHT:
SPEC.: 3000K	DIM.:	SERIAL No.: 2405210567
MFR.: RISE	SUR.: 0.00362984m2	Shielding Angle:



C Range: 0 - 360DEG
C Interval: 30.0DEG
Test Speed: HIGH
Temperature: 25.3 °C
Operators: zoe
Test Date: 2024-5-21

γ Range: 0 - 180DEG
γ Interval: 1.0DEG
Test System: EVERFINE GO-SPEX500_V1 SYSTEM V2.00.461
Humidity: 65.0%
Test Distance: 3.160m [K=1.0000]
Remarks: LAMP: BXRE-30G10TH-A-83 Ra: 90
LENS: PM-1082A-WH 24R
NO DRIVER: 300mA
30minutes warm-up

LED Avg.L Report

Test:U:33.885V I:0.3000A P:10.165W PF:1.0000 Freq:0Hz Lamp Flux:1537.95x1 lm		
NAME: 2318.127-ACOT-70-HE	TYPE:	WEIGHT:
SPEC.: 3000K	DIM.:	SERIAL No.: 2405210567
MFR.: RISE	SUR.: 0.00362984m2	Shielding Angle:

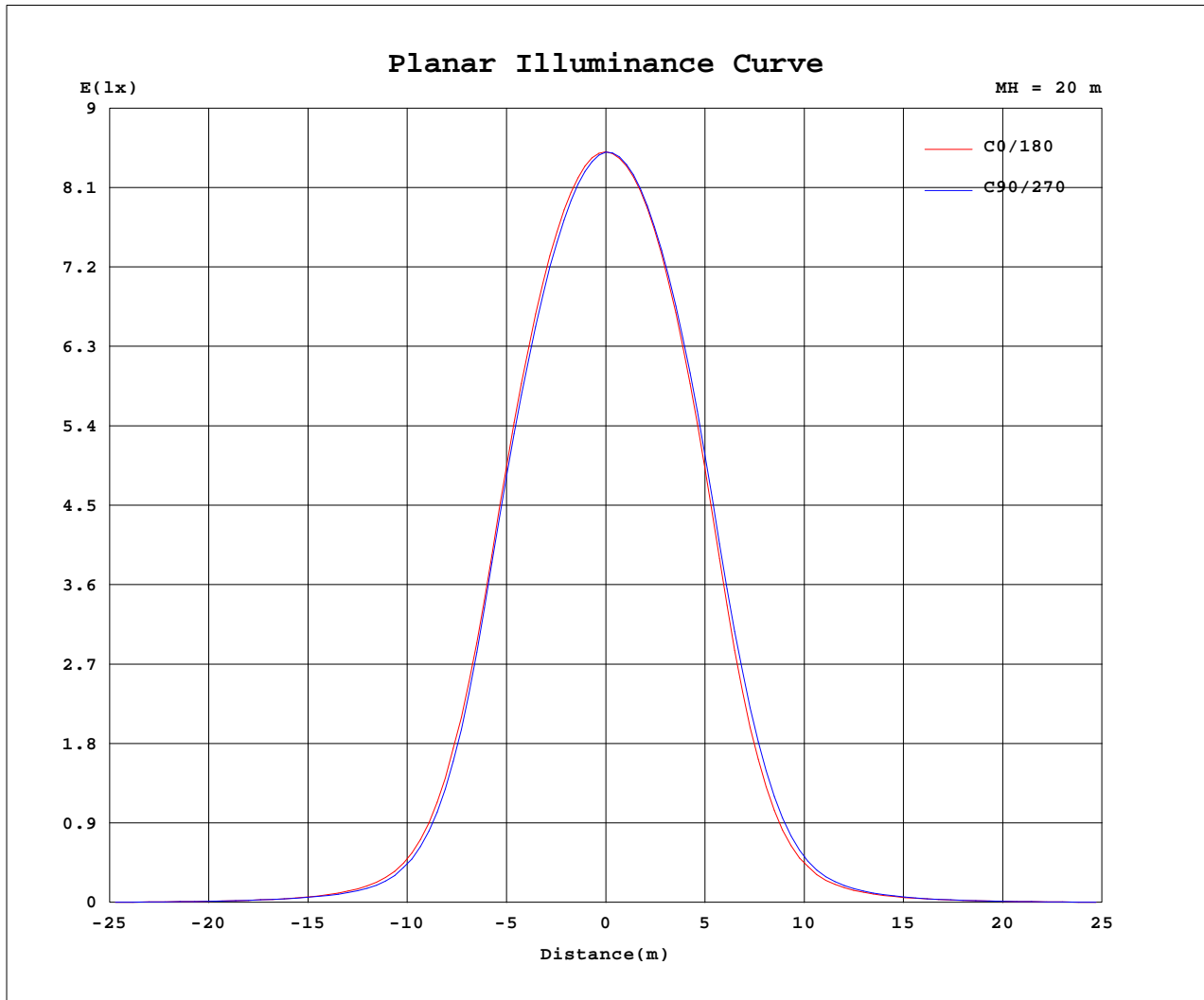
AvgL	cd/m2
L_0~180(65)av	569
L_0~180(75)av	139
L_0~180(85)av	115
L_90~270(65)av	562
L_90~270(75)av	137
L_90~270(85)av	116
L_45(65)av	562
L_45(75)av	127
L_45(85)av	65

Standard: GB/T 29293-2012

C Range: 0 - 360DEG
C Interval: 30.0DEG
Test Speed: HIGH
Temperature:25.3℃
Operators:zoe
Test Date:2024-5-21

γ Range: 0 - 180DEG
γ Interval: 1.0DEG
Test System:EVERFINE GO-SPEX500_V1 SYSTEM V2.00.461
Humidity:65.0%
Test Distance:3.160m [K=1.0000]
Remarks: LAMP:BXRE-30G10TH-A-83 Ra:90
LENS:PM-1082A-WH 24R
NO DRIVER:300mA
30minutes warm-up

Planar Illuminance Curve



C Range: 0 - 360DEG
 C Interval: 30.0DEG
 Test Speed: HIGH
 Temperature: 25.3 °C
 Operators: zoe
 Test Date: 2024-5-21

γ Range: 0 - 180DEG
 γ Interval: 1.0DEG
 Test System: EVERFINE GO-SPEX500_V1 SYSTEM V2.00.461
 Humidity: 65.0%
 Test Distance: 3.160m [K=1.0000]
 Remarks: LAMP: BXRE-30G10TH-A-83 Ra: 90
 LENS: PM-1082A-WH 24R
 NO DRIVER: 300mA
 30minutes warm-up



LUMINOUS DISTRIBUTION INTENSITY DATA

Test:U:33.885V I:0.3000A P:10.165W PF:1.0000 Freq:0Hz Lamp Flux:1537.95x1 lm		
NAME: 2318.127-ACOT-70-HE	TYPE:	WEIGHT:
SPEC.: 3000K	DIM.:	SERIAL No.: 2405210567
MFR.: RISE	SUR.: 0.00362984m2	Shielding Angle:

Table--1

UNIT: cd

C(DEG) γ (DEG)	0	30	60	90	120	150	180	210	240	270	300	330						
0	3401	3401	3401	3401	3401	3401	3401	3401	3401	3401	3401	3401						
5	3255	3236	3219	3219	3232	3255	3261	3259	3270	3272	3275	3265						
10	2791	2763	2746	2734	2740	2785	2797	2795	2823	2832	2831	2817						
15	1979	1965	1954	1931	1917	1952	1958	1972	2028	2036	2022	2003						
20	1011	996	975	945	921	945	956	974	1055	1064	1056	1035						
25	385	376	364	341	332	342	348	356	401	407	409	398						
30	142	138	133	122	117	125	127	130	145	147	147	148						
35	64.9	63.4	62.6	58.9	56.6	60.3	59.6	59.6	64.7	66.0	65.4	67.1						
40	33.0	33.0	33.2	32.3	31.1	32.3	31.4	30.5	32.2	33.3	33.6	33.9						
45	16.6	17.3	17.9	18.2	17.5	18.0	17.0	15.9	16.0	16.4	16.6	16.6						
50	9.38	9.72	9.88	9.76	9.47	9.76	9.35	8.84	8.70	9.18	9.13	9.34						
55	4.73	4.82	4.61	4.63	4.38	4.44	4.26	4.33	4.30	4.29	4.36	4.65						
60	1.48	1.50	1.48	1.46	1.41	1.39	1.36	1.35	1.34	1.35	1.37	1.42						
65	0.90	0.91	0.90	0.90	0.88	0.87	0.85	0.83	0.83	0.82	0.83	0.86						
70	0.43	0.43	0.43	0.44	0.43	0.43	0.43	0.41	0.41	0.41	0.40	0.41						
75	0.13	0.12	0.11	0.12	0.12	0.13	0.13	0.13	0.13	0.13	0.12	0.11						
80	0.06	0.05	0.05	0.06	0.05	0.05	0.06	0.06	0.06	0.07	0.05	0.04						
85	0.04	0.02	0.02	0.04	0.02	0.02	0.04	0.03	0.02	0.04	0.02	0.02						
90	0.00	0.00	0.00	0.00	0.00	0.00	0.00	0.00	0.00	0.00	0.00	0.00						
95	0.00	0.00	0.00	0.00	0.00	0.00	0.00	0.00	0.00	0.00	0.00	0.00						
100	0.00	0.00	0.00	0.00	0.00	0.00	0.00	0.00	0.00	0.00	0.00	0.00						
105	0.00	0.00	0.00	0.00	0.00	0.00	0.00	0.00	0.00	0.00	0.00	0.00						
110	0.00	0.00	0.00	0.00	0.00	0.00	0.00	0.00	0.00	0.00	0.00	0.00						
115	0.00	0.00	0.00	0.00	0.00	0.00	0.00	0.00	0.00	0.00	0.00	0.00						
120	0.00	0.00	0.00	0.00	0.00	0.00	0.00	0.00	0.00	0.00	0.00	0.00						
125	0.00	0.00	0.00	0.00	0.00	0.00	0.00	0.00	0.00	0.00	0.00	0.00						
130	0.00	0.00	0.00	0.00	0.00	0.00	0.00	0.00	0.00	0.00	0.00	0.00						
135	0.00	0.00	0.00	0.00	0.00	0.00	0.00	0.00	0.00	0.00	0.00	0.00						
140	0.00	0.00	0.00	0.00	0.00	0.00	0.00	0.00	0.00	0.00	0.00	0.00						
145	0.00	0.00	0.00	0.00	0.00	0.00	0.00	0.00	0.00	0.00	0.00	0.00						
150	0.00	0.00	0.00	0.00	0.00	0.00	0.00	0.00	0.00	0.00	0.00	0.00						
155	0.00	0.00	0.00	0.00	0.00	0.00	0.00	0.00	0.00	0.00	0.00	0.00						
160	0.00	0.00	0.00	0.00	0.00	0.00	0.00	0.00	0.00	0.00	0.00	0.00						
165	0.00	0.00	0.00	0.00	0.00	0.00	0.00	0.00	0.00	0.00	0.00	0.00						
170	0.00	0.00	0.00	0.00	0.00	0.00	0.00	0.00	0.00	0.00	0.00	0.00						
175	0.00	0.00	0.00	0.00	0.00	0.00	0.00	0.00	0.00	0.00	0.00	0.00						
180	0.00	0.00	0.00	0.00	0.00	0.00	0.00	0.00	0.00	0.00	0.00	0.00						

C Range: 0 - 360DEG
C Interval: 30.0DEG
Test Speed: HIGH
Temperature:25.3℃
Operators:zoe
Test Date:2024-5-21

γ Range: 0 - 180DEG
γ Interval: 1.0DEG
Test System:EVERFINE GO-SPEX500_V1 SYSTEM V2.00.461
Humidity:65.0%
Test Distance:3.160m [K=1.0000]
Remarks: LAMP:BXRE-30G10TH-A-83 Ra:90
LENS:PM-1082A-WH 24R
NO DRIVER:300mA
30minutes warm-up